

## Practice

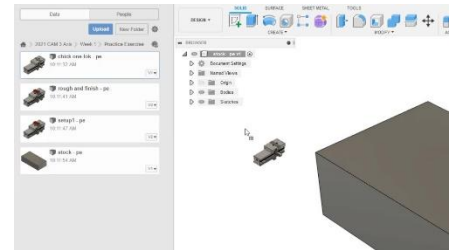
Practice: Insert and align a vise into a design.

- Create a distributed design.
- Break a design link.
- Use Align.
- Use Move/Copy.

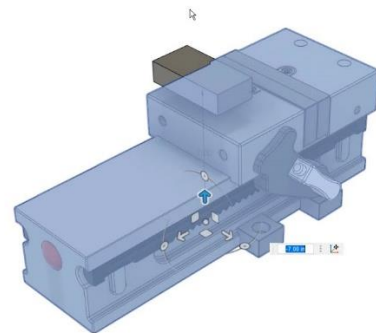
1. Upload the supplied dataset *stock – pe.f3d*.



2. Drag and drop the dataset *chick one-lock – pe.f3d* into the canvas area of the open design.

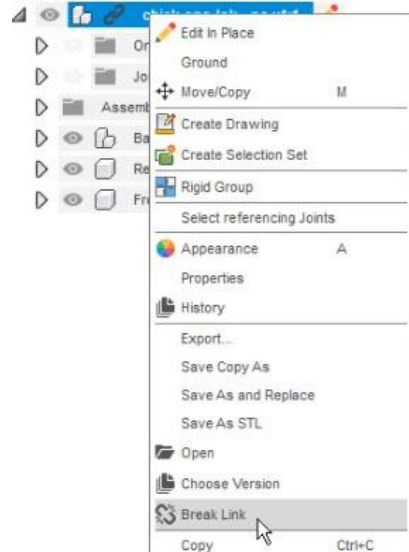


3. While the Move/Copy dialog is open move the entire vise below the stock and capture its position.



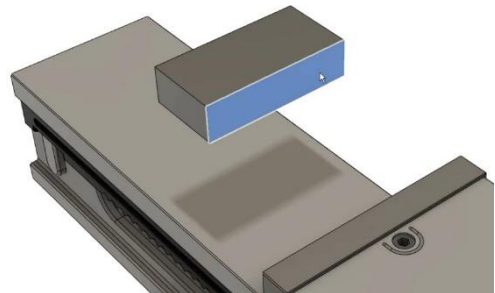
4. Right-click on the one-lock – pe in the browser and break its link.

NOTE: You are not required to break the link to the original design but often it makes it easier to position a vise and potentially modify it if needed.

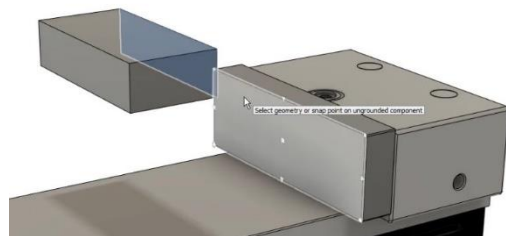


5. Hide the Front Jaw of the vise and select Modify > Align. Select the face of the stock closest to the rear jaw.

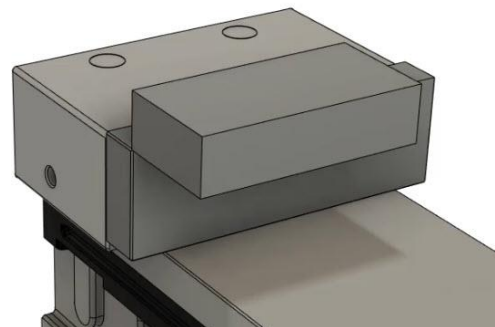
NOTE: When selecting faces during align be sure you do not select a snap point for this example.



6. Select the vise jaw face as the to location for align and capture its position.



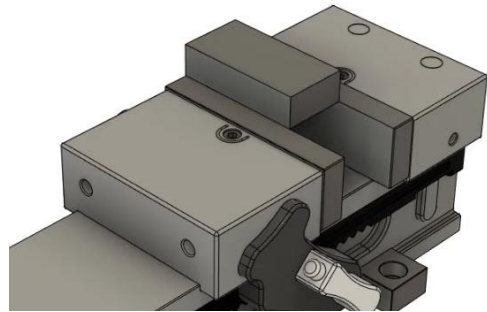
7. Repeat the align process two more times setting the stock at the top face of the vise jaw and aligned with it on the left side using capture position each time.



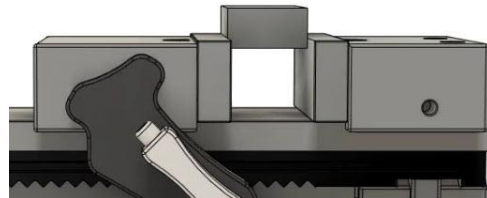
8. Temporarily ground the base component inside the vise to prevent the vise and fixed jaw from moving during future align operations.



9. Use Align to position the front jaw of the vise.



10. Unground the vise base component and use Move/Copy to move the entire vise component up 0.25 inches.



11. Save the design.

